



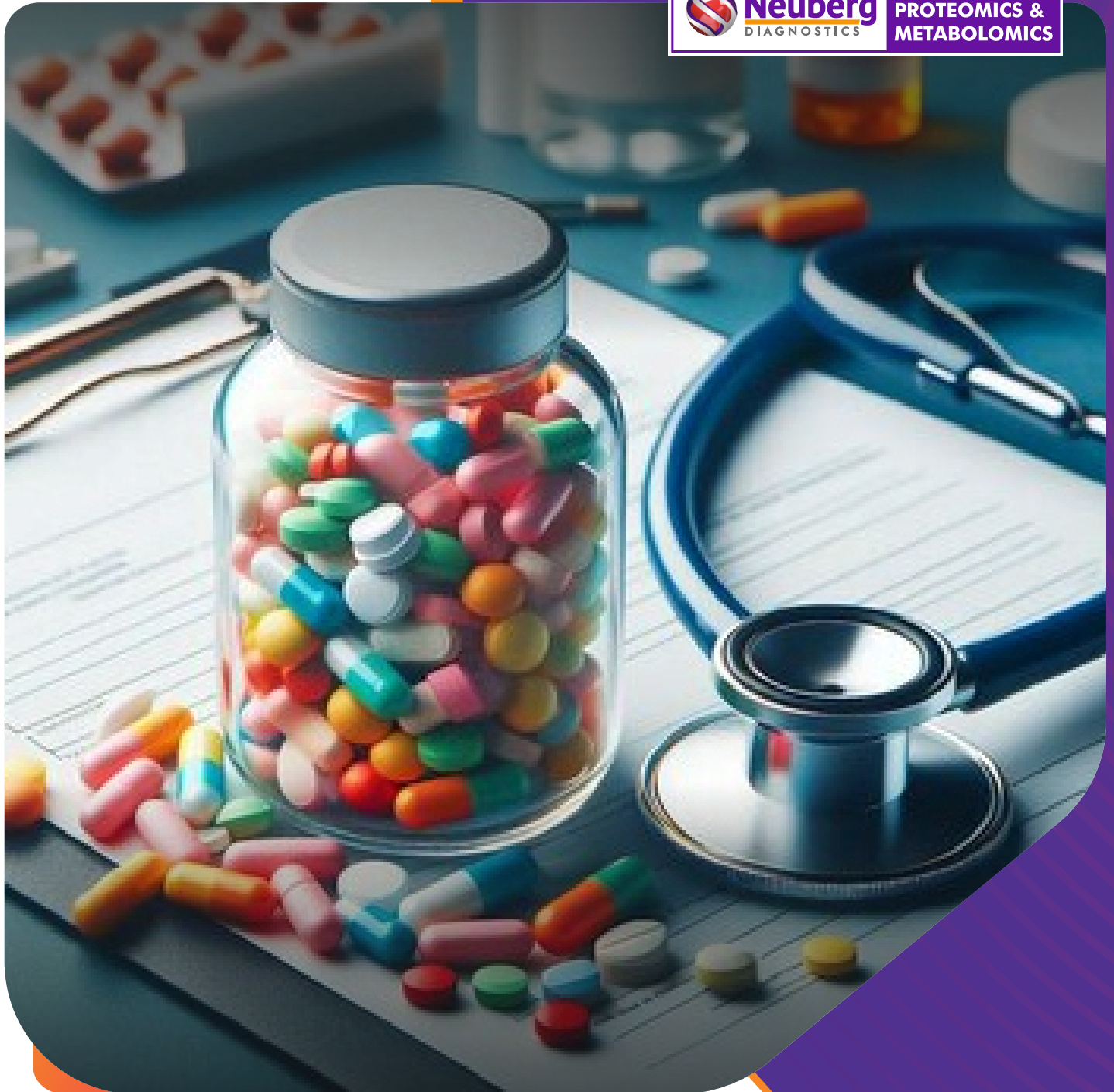
● India ● UAE ● South Africa ● USA

New INSIGHTS



Neuberg
DIAGNOSTICS

CENTER FOR
PROTEOMICS &
METABOLOMICS



Therapeutic Drug Monitoring (TDM)

Precision that Protects.

Therapeutic Drug Monitoring (TDM)

Precision that Protects.

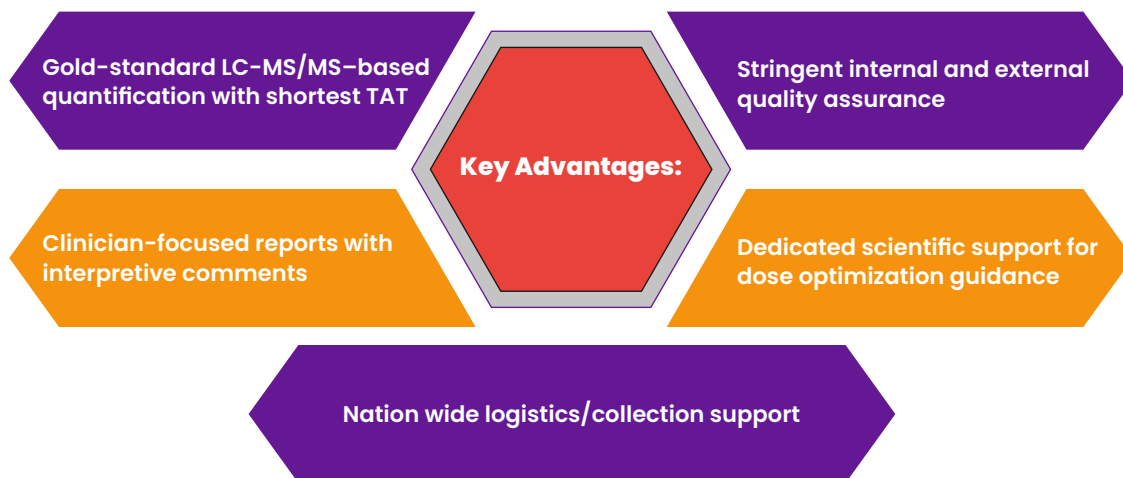
About Therapeutic Drug Monitoring

Therapeutic Drug Monitoring (TDM) measures specific drugs and their metabolites in blood to ensure safe and effective dosing for each patient. It helps clinicians to:

- ▶ Achieve optimal therapeutic levels
- ▶ Prevent toxicity and under-dosing
- ▶ Manage inter-patient variation in metabolism
- ▶ Monitor compliance and treatment response
- ▶ Monitor Area under curve (AUC)

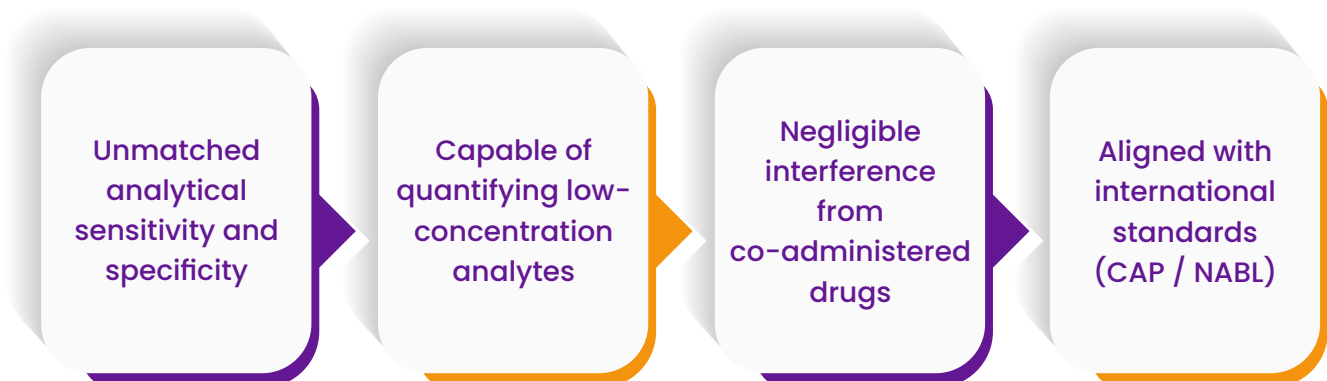
Why Neuberg Diagnostics for TDM?

Neuberg Diagnostics – Center for Proteomics & Metabolomics provides advanced LC-MS/MS-based testing for therapeutic drug monitoring. Our expertise ensures precision, speed, and reliability across all critical drug classes with affordable cost.



Technology at Neuberg Diagnostics

Liquid Chromatography – Tandem Mass Spectrometry (LC-MS/MS)



Clinical Use Cases

TDM is indicated for drugs with:

- ▶ Narrow therapeutic index
- ▶ High inter-individual variability
- ▶ Serious toxicity potential
- ▶ Non-linear pharmacokinetics

Drug Panels Available at Neuberg Diagnostics

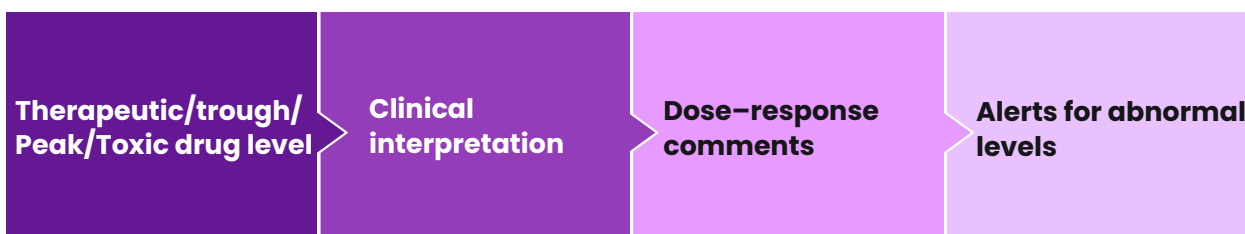
Drugs	Service Code	Drugs	Service Code
Immunosuppressants (transplant)		Itraconazole	(T4467)
Tacrolimus	(G2107)	Ketoconazole	(T22285)
Sirolimus	(T1578)	Posaconazole	(A0325)
Everolimus	(T904)	Voriconazole	(T3614)
Cyclosporine A	(G2070)	Isavuconazole	(T991)
Methotrexate	(T1185)	OH-Itraconazole	(T4467)
Antiepileptics (Neurologist)		Anti tuberculin drugs (Infectious disease)	
Ethosuximide	(T955)	Rifmpicin	(T970)
Lamotrigin	(T967)	Isoniazid	(T966)
Levetiracetam	(T833)	Ethambutol	(T720)
Oxcarbazepine	(T866)	Pyrizamide	(T971)
Phenobarbital/Phenobarbitone	(G2278)	Individual drugs	
Phenytoin	(GGS2072)	Paracetamol (Acetaminophen)	(S1278)
Valproic Acid	(TTS321)	Risperidone (Antipsychotic)	(T22256)
Carbamazepine	(G2276)	Vancomycin (Antibiotic)	(T826)
Brivaracetam	(T520)	Olanzapine (Antipsychotic)	(T13145)
Lacosamide	(T838)	Amiodarone & Desethylamiodarone	(T21535)
Antimycotics/Anti Fungal (Infectious disease)		Clozapine (Antipsychotic)	(C0247)
Fluconazole	(T842)	Amikacin (Antibiotic)	(T22260)
		Gentamycin (Antibiotic)	(T22261)

Sample Requirements

- ▶ Specimen: Serum (Gel tube not acceptable) or plasma (EDTA / Heparinized)
- ▶ Volume: 2–3 mL
- ▶ Stability: 24 hours refrigerated; longer with frozen storage
- ▶ Preferred Timing: Trough sample (just before next dose)

Interpretive Support

Each report includes:



Partner with Neuberg Diagnostics

Empower your clinical decisions with evidence-based drug management.
Accurate Reliable Clinician-Backed

PARTNERS IN HEALTH



DR. AKASH SHAH

Consultant Pathologist

akash.shah@neubergdiagnostics.com

+91-7046010135



DR. SANDIP SHAH

Consultant Pathologist

M.D. (Pathology & Bacteriology)

Laboratory Director

drsandip@neubergdiagnostics.com

079-40408181

FOR MORE DETAILS, CONTACT US AT

Neuberg Diagnostics – Center for Proteomics & Metabolomics

 +91 97123 71714  ncpm@neubergdiagnostics.com

www.neubergdiagnostics.com